

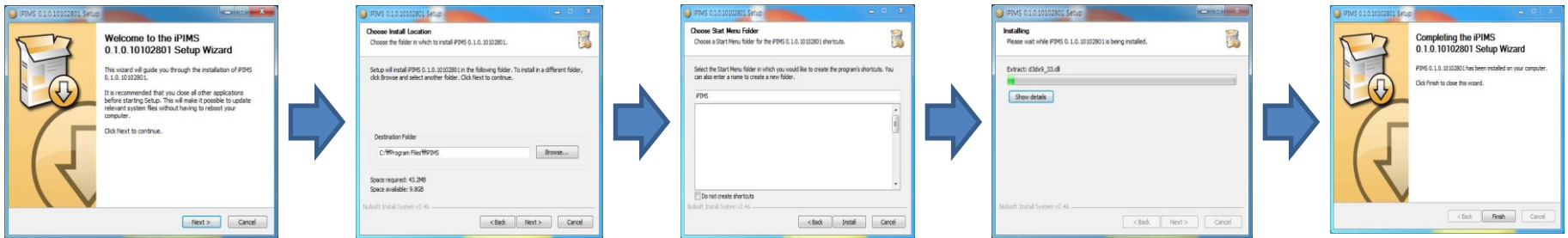
iPIMS (iDVR IP Device Management SW) QUICK INSTALLATION GUIDE

1. SW Installation on PC

a. Double Click the installation file



b. Input proper information during install the SW



*select the path to install the SW

* Select whether to create the short cut on Desktop

Minimum System Requirement

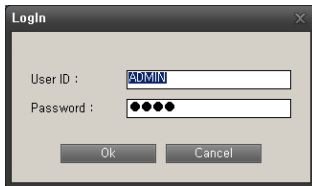
Operating System	XP Professional, Vista, Win7 (only 32bit)
CPU	Core2Duo or Higher
Memory	1GB or Higher
Graphic Card	256MB memory or Higher
HDD	Minimum 100MB Free
S W	DirectX 9.0

iPIMS (iDVR IP Device Management SW) QUICK INSTALLATION GUIDE

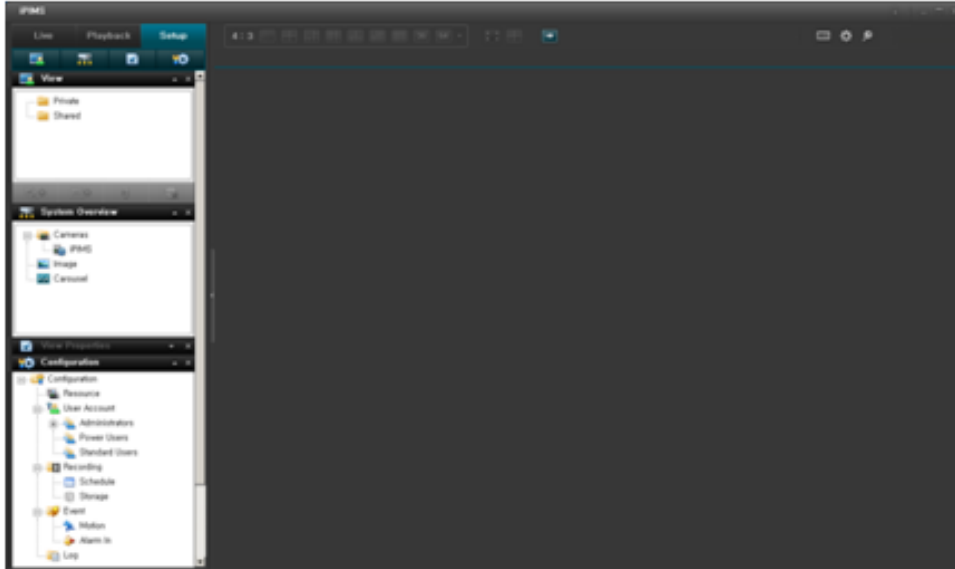
2. Execute the SW
 - a. Double Click the iPIMS shortcut icon on desktop



- b. Input ID and PW (*default is ADMIN/1234)



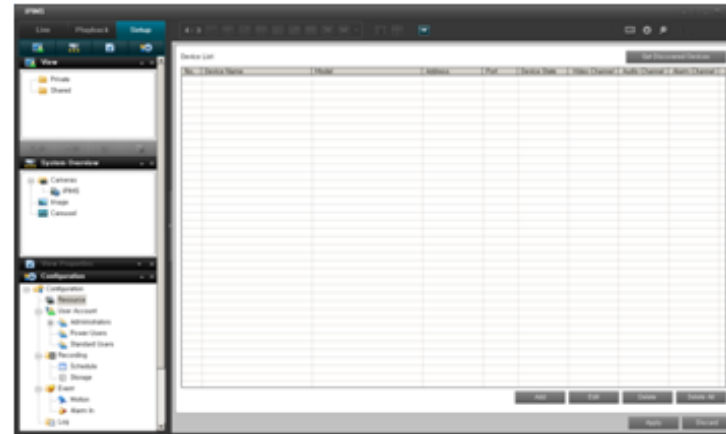
- c. Below is the default Screen of iPIMS SW



iPIMS (iDVR IP Device Management SW) QUICK INSTALLATION GUIDE

3. Register Devices

a. Click [Resource] on Left bottom panel.



*Device list will be activated

b. Press [ADD] button to register new device.

* To Add DVR

- 1) Device Name : Input Device Name
- 2) Model : Select a model
(incase of DVR, select 'New H.264 type DVR')
- 3) Address : Input IP or URL of DVR.
- 4) Port : input the Web port number that is set on DVR
- 5) ID : Input the ID of DVR
- 6) Password : Input the PW of DVR



iPIMS (iDVR IP Device Management SW)

QUICK INSTALLATION GUIDE

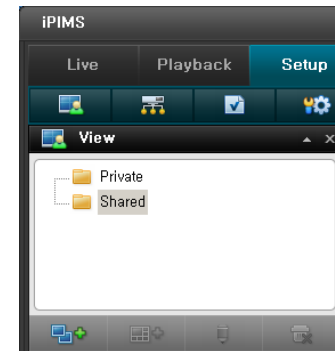
4. Create View

a. select [View] window on Left panel.

Private : view for particular user who create the view.

Shared : View for all user.

b. Select Private or Shared view (explanation will be progressed with Shared mode)



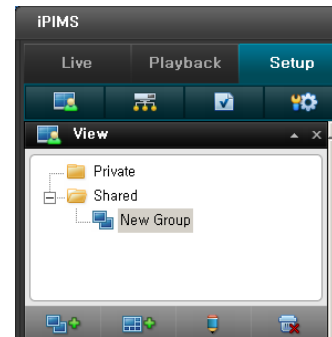
c. Press [Create Group] button to Add a new Group.



d. Input a Group name of view

then next button for create view will be activated

e. Press [Create View] buttons now.



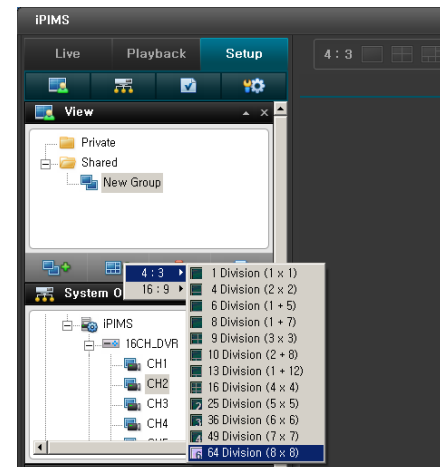
f. Select a Ratio depends on monitor.

* 4 : 3 / 16 : 9 are available.

g. Select a View style

* Maximum 64 division is available.

This means 64 camera can be shown at a screen.

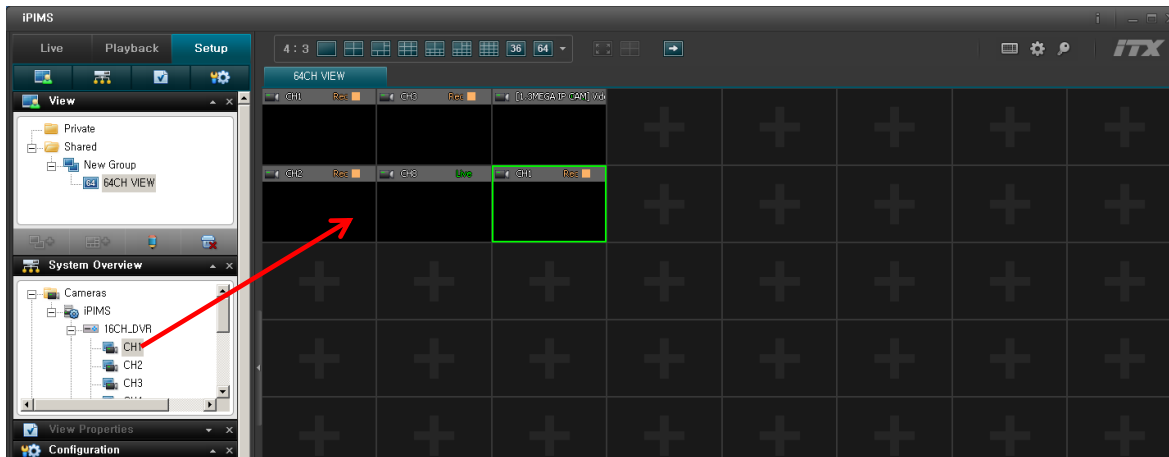


iPIMS (iDVR IP Device Management SW) QUICK INSTALLATION GUIDE

h. View format will be displayed at Right panel.

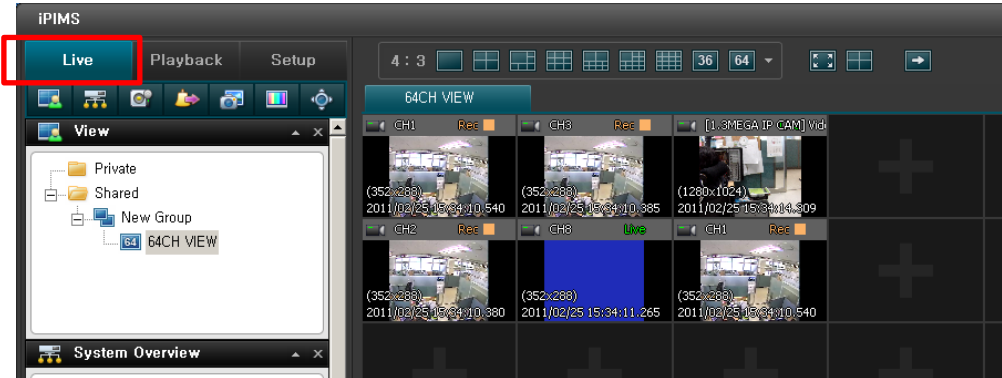


i. Drag cameras from each system on System overview to View format panel.



iPIMS (iDVR IP Device Management SW) QUICK INSTALLATION GUIDE

j. Select Live Tab on Left Top.



k. Complete to live surveillance.